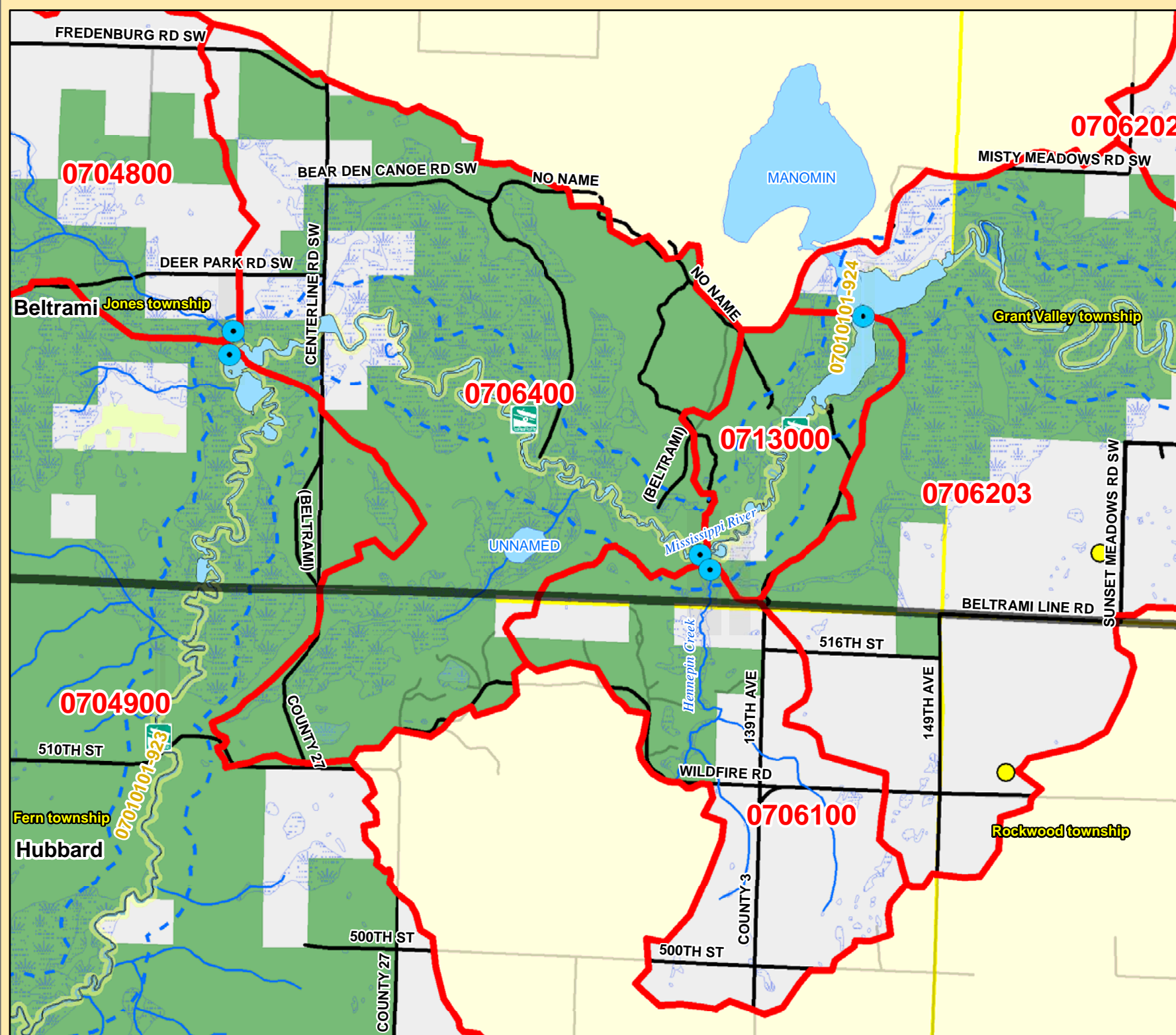


Mississippi River Catchment Map: Beltrami, Hubbard Bndy

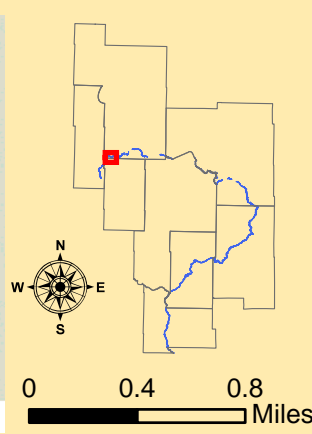


Catchment #	0706100
River Stretch(es) (AUIDs)	07010101-924
Area (sq. miles)	3
Population 2010 (persons per sq. mile)	9
Population Change 2000 to 2010 (persons per sq. mile)	2
Surficial Geology	Lacustrine
Topography	Gently Rolling
% Slope (avg.)	7
% Forested (private)	39
% Disturbed Land Cover	24
% Developed	4
# of Animal Units	0
% Public Land	29
% Easements	0
% Lakes	0
% Mississippi River	0
% Wetlands (private)	3
% Protected	32
Risk Classification	Enhance / Protection

Catchment #	0706400
River Stretch(es) (AUIDs)	07010101-924
Area (sq. miles)	7
Population 2010 (persons per sq. mile)	1
Population Change 2000 to 2010 (persons per sq. mile)	0
Surficial Geology	Outwash
Topography	Gently Rolling
% Slope (avg.)	10
% Forested (private)	8
% Disturbed Land Cover	6
% Developed	1
# of Animal Units	0
% Public Land	84
% Easements	0
% Lakes	0
% Mississippi River	1
% Wetlands (private)	6
% Protected	92
Risk Classification	Vigilance

Implementation Priorities	
<i>Surface Water</i>	
Aquatic Invasive Species	
Development (existing and potential)	
Agricultural BMPs	
Lake Focus:	
Lake Focus: Wild Rice	
Lake Focus: Shallow /Wildlife	
Private Forest Stewardship	x
Bluffs & Steep Slopes	
Bald Eagle Territory	
Critical Bird Habitat	
Rare Native Plants / Communities	
Native Mussel Habitat	
<i>Ground Water</i>	
Wellhead Protection	

Implementation Priorities	
<i>Surface Water</i>	
Aquatic Invasive Species	
Development (existing and potential)	
Agricultural BMPs	
Lake Focus:	
Lake Focus: Wild Rice	
Lake Focus: Shallow /Wildlife	
Private Forest Stewardship	
Bluffs & Steep Slopes	x
Bald Eagle Territory	
Critical Bird Habitat	
Rare Native Plants / Communities	x
Native Mussel Habitat	
<i>Ground Water</i>	
Wellhead Protection	



- Public Waterworks
- Water Use: Air Conditioning
- Water Use: Industrial Processing
- Irrigation: Crop
- Irrigation: Non Crop
- Water Use: Special Categories
- MPCA Permitted Sites
- Drinking Water Source Protection Areas
- Wellhead Protection Areas
- Dams
- Active Gravel Pits
- Water Access Sites
- Feedlots (by primary animal)**
- BIRDS
- BOVINES
- HORSES
- PIGS
- Wetlands (from NWI)
- Wild Rice
- Zebra Mussels
- Eurasian W. Milfoil, Faucet Snail, Zebra Mussels
- Lakes
- Zebra Mussels (Miss R.)
- Faucet Snail (Miss R.)
- Mississippi River
- Trout Streams
- Streams
- River Stretches (AUIDs) w/ Water Quality Data
- River Stretches (AUIDs) w/out Water Quality Data
- Outlet - Major Watershed
- Outlet - Catchment
- Catchments (DNR Level 8)
- Major Watersheds
- Conservation Easements
- Public Lands
- Cities / Townships
- County Boundaries
- Roads
- Proposed Mississippi River Trail (MRT) Route
- Taconite State Trail
- Paul Bunyan State Trail
- Heartland State Trail
- State Park Boundaries
- State Recreation Area Boundaries
- Scientific and Natural Areas
- Wildlife Management Areas
- Mississippi Headwaters Board (MHB) - Corridor