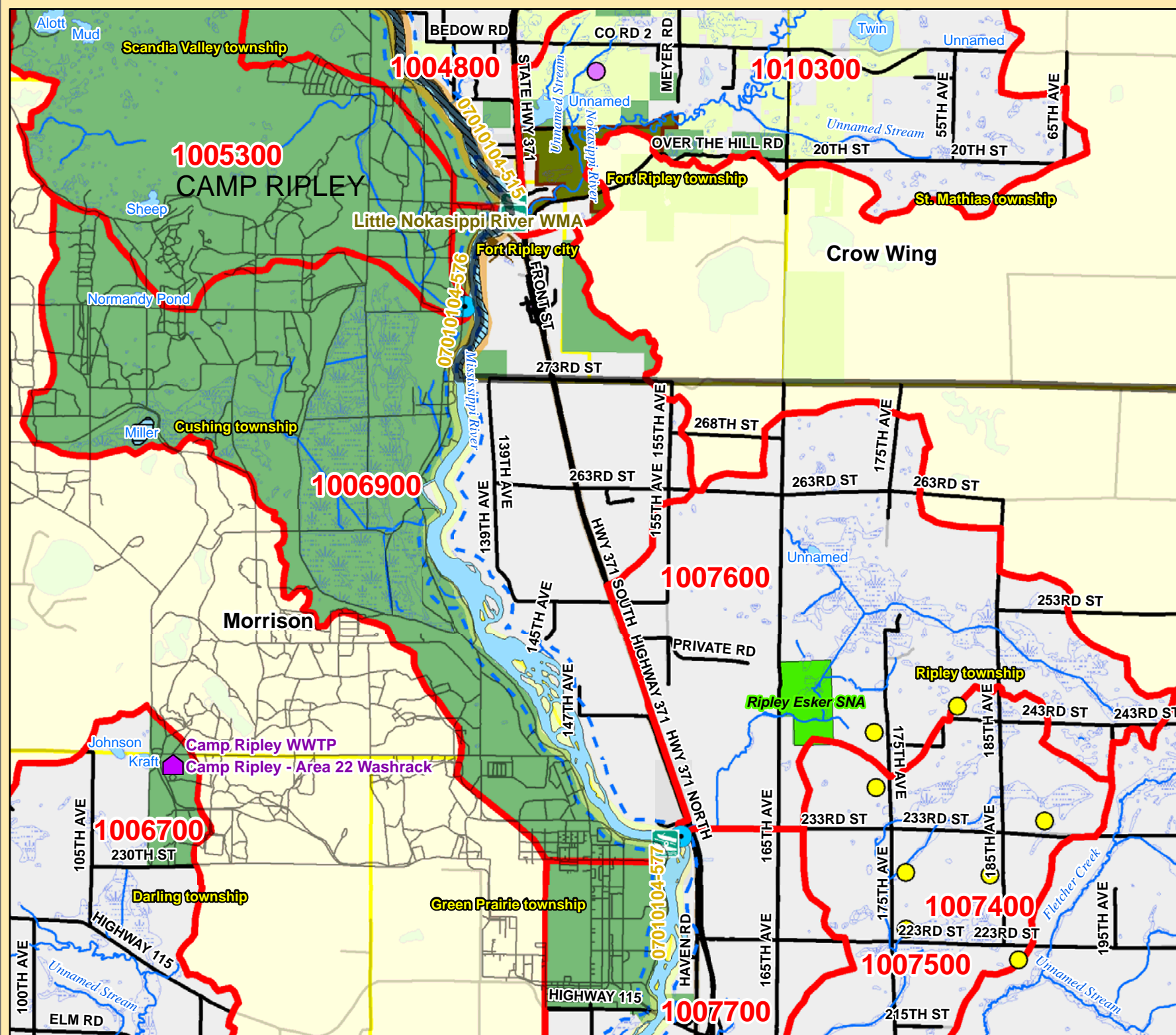
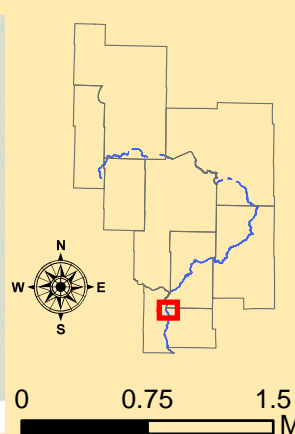


# Mississippi R. Catchment Map: Fort Ripley



Catchment #	1006900
River Stretch(es) (AUIDs)	07010104-515
Area (sq. miles)	18
Population 2010 (persons per sq. mile)	7
Population Change 2000 to 2010 (persons per sq. mile)	-1
Surficial Geology	Outwash
Topography	Level
% Slope (avg.)	9
% Forested (private)	6
% Disturbed Land Cover	54
% Developed	9
# of Animal Units	0
% Public Land	60
% Easements	1
% Lakes	0
% Mississippi River	5
% Wetlands (private)	0
% Protected	66
<b>Risk Classification</b>	<b>Vigilance</b>
<b>Implementation Priorities</b>	
<i>Surface Water</i>	
Aquatic Invasive Species	x
Development (existing and potential)	
Agricultural BMPs	
Lake Focus:	
Lake Focus: Wild Rice	x
Lake Focus: Shallow /Wildlife	
Private Forest Stewardship	
Bluffs & Steep Slopes	
Bald Eagle Territory	x
Critical Bird Habitat	x
Rare Native Plants / Communities	x
Native Mussel Habitat	
<i>Ground Water</i>	
Wellhead Protection	x

Catchment #	1007600
River Stretch(es) (AUIDs)	N/A
Area (sq. miles)	10
Population 2010 (persons per sq. mile)	13
Population Change 2000 to 2010 (persons per sq. mile)	2
Surficial Geology	Till Plain
Topography	Gently Rolling
% Slope (avg.)	7
% Forested (private)	10
% Disturbed Land Cover	83
% Developed	3
# of Animal Units	49
% Public Land	3
% Easements	1
% Lakes	0
% Mississippi River	0
% Wetlands (private)	12
% Protected	16
<b>Risk Classification</b>	<b>Enhance</b>
<b>Implementation Priorities</b>	
<i>Surface Water</i>	
Aquatic Invasive Species	
Development (existing and potential)	
Agricultural BMPs	x
Lake Focus:	
Lake Focus: Wild Rice	
Lake Focus: Shallow /Wildlife	
Private Forest Stewardship	
Bluffs & Steep Slopes	
Bald Eagle Territory	
Critical Bird Habitat	x
Rare Native Plants / Communities	x
Native Mussel Habitat	
<i>Ground Water</i>	
Wellhead Protection	



- Public Waterworks
- Water Use: Air Conditioning
- Water Use: Industrial Processing
- Irrigation: Crop
- Irrigation: Non Crop
- Water Use: Special Categories
- road\_centerline
- MPCA Permitted Sites
- Drinking Water Source Protection Areas
- Wellhead Protection Areas
- Dams
- Active Gravel Pits
- Water Access Sites
- Feedlots (by primary animal)**
- BIRDS
- BOVINES
- HORSES
- PIGS
- Wetlands (from NWI)
- Wild Rice
- Zebra Mussels
- Eurasian W. Milfoil, Faucet Snail, Zebra Mussels
- Lakes
- Zebra Mussels (Miss R.)
- Faucel Snail (Miss R.)
- Mississippi River
- Trout Streams
- Streams
- River Stretches (AUIDs) w/ Water Quality Data
- River Stretches (AUIDs) w/out Water Quality Data
- Outlet - Major Watershed
- Outlet - Catchment
- Catchments (DNR Level 8)
- Major Watersheds
- Conservation Easements
- Public Lands
- Cities / Townships
- County Boundaries
- Roads
- Proposed Mississippi River Trail (MRT) Route
- Taconite State Trail
- Paul Bunyan State Trail
- Heartland State Trail
- State Park Boundaries
- State Recreation Area Boundaries
- Scientific and Natural Areas
- Wildlife Management Areas
- Mississippi Headwaters Board (MHB) - Corridor