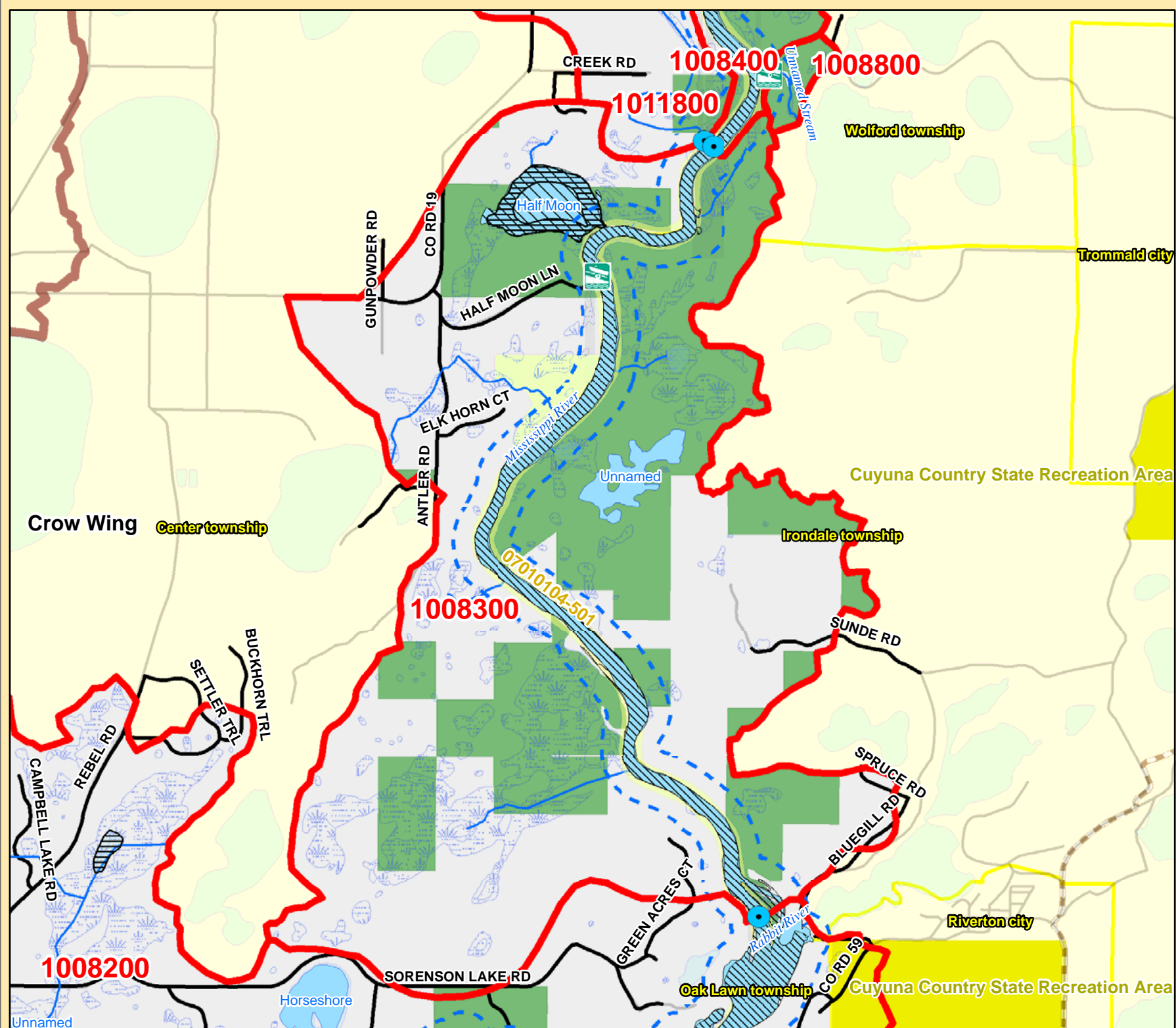


# Mississippi R. Catchment Map: Half Moon Lake / Landing

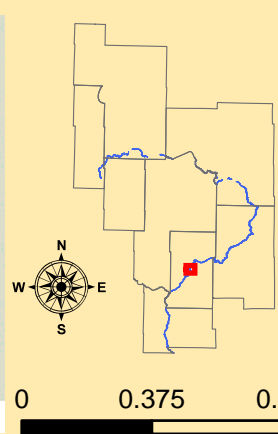


| Catchment #   | 1008300                     |
|---|-----------------------------|
| River Stretch(es) (AUIDs)                             | 07010104-501                |
| Area (sq. miles)                                      | 7                           |
| Population 2010 (persons per sq. mile)                | 11                          |
| Population Change 2000 to 2010 (persons per sq. mile) | 2                           |
| Surficial Geology                                     | Outwash                     |
| Topography  | Steep                       |
| % Slope (avg.)  | 13                          |
| % Forested (private)                                  | 35                          |
| % Disturbed Land Cover                                | 8                           |
| % Developed   | 1                           |
| # of Animal Units                                     | 0                           |
| % Public Land   | 55                          |
| % Easements   | 2                           |
| % Lakes   | 3                           |
| % Mississippi River                                   | 4                           |
| % Wetlands (private)                                  | 6                           |
| <b>% Protected</b>                                    | <b>70</b>                   |
| <b>Risk Classification</b>                            | <b>Enhance / Protection</b> |

| Catchment #   | 1008800               |
|---|-----------------------|
| River Stretch(es) (AUIDs)                             | 07010104-501          |
| Area (sq. miles)                                      | 0                     |
| Population 2010 (persons per sq. mile)                | 1                     |
| Population Change 2000 to 2010 (persons per sq. mile) | -3                    |
| Surficial Geology                                     | Outwash               |
| Topography  | Rolling to Undulating |
| % Slope (avg.)  | 13                    |
| % Forested (private)                                  | 2                     |
| % Disturbed Land Cover                                | 3                     |
| % Developed   | 0                     |
| # of Animal Units                                     | 0                     |
| % Public Land   | 96                    |
| % Easements   | 0                     |
| % Lakes   | 0                     |
| % Mississippi River                                   | 0                     |
| % Wetlands (private)                                  | 0                     |
| <b>% Protected</b>                                    | <b>96</b>             |
| <b>Risk Classification</b>                            | <b>Vigilance</b>      |

| Implementation Priorities            |   |
|--------------------------------------|---|
| Surface Water                        |   |
| Aquatic Invasive Species             | x |
| Development (existing and potential) |   |
| Agricultural BMPs                    |   |
| Lake Focus:                          |   |
| Lake Focus: Wild Rice                | x |
| Lake Focus: Shallow /Wildlife        |   |
| Private Forest Stewardship           | x |
| Bluffs & Steep Slopes                | x |
| Bald Eagle Territory                 | x |
| Critical Bird Habitat                |   |
| Rare Native Plants / Communities     |   |
| Native Mussel Habitat                | x |
| Ground Water                         |   |
| Wellhead Protection                  |   |

| Implementation Priorities            |   |
|--------------------------------------|---|
| Surface Water                        |   |
| Aquatic Invasive Species             |   |
| Development (existing and potential) |   |
| Agricultural BMPs                    |   |
| Lake Focus:                          |   |
| Lake Focus: Wild Rice                |   |
| Lake Focus: Shallow /Wildlife        |   |
| Private Forest Stewardship           |   |
| Bluffs & Steep Slopes                | x |
| Bald Eagle Territory                 |   |
| Critical Bird Habitat                |   |
| Rare Native Plants / Communities     |   |
| Native Mussel Habitat                |   |
| Ground Water                         |   |
| Wellhead Protection                  |   |



- Public Waterworks
- Water Use: Air Conditioning
- Water Use: Industrial Processing
- Irrigation: Crop
- Irrigation: Non Crop
- Water Use: Special Categories
- MPCA Permitted Sites
- Drinking Water Source Protection Areas
- Wellhead Protection Areas
- Dams
- Active Gravel Pits
- Water Access Sites
- Feedlots (by primary animal)**
- BIRDS
- BOVINES
- HORSES
- PIGS
- Wetlands (from NWI)
- Wild Rice
- Zebra Mussels
- Eurasian W. Milfoil, Faucet Snail, Zebra Mussels
- Lakes
- Zebra Mussels (Miss R.)
- Faucet Snail (Miss R.)
- Mississippi River
- Trout Streams
- Streams
- River Stretches (AUIDs) w/ Water Quality Data
- River Stretches (AUIDs) w/out Water Quality Data
- Outlet - Major Watershed
- Outlet - Catchment
- Catchments (DNR Level 8)
- Major Watersheds
- Conservation Easements
- Public Lands
- Cities / Townships
- County Boundaries
- Roads
- Proposed Mississippi River Trail (MRT) Route
- Taconite State Trail
- Paul Bunyan State Trail
- Heartland State Trail
- State Park Boundaries
- State Recreation Area Boundaries
- Scientific and Natural Areas
- Wildlife Management Areas
- Mississippi Headwaters Board (MHB) - Corridor

