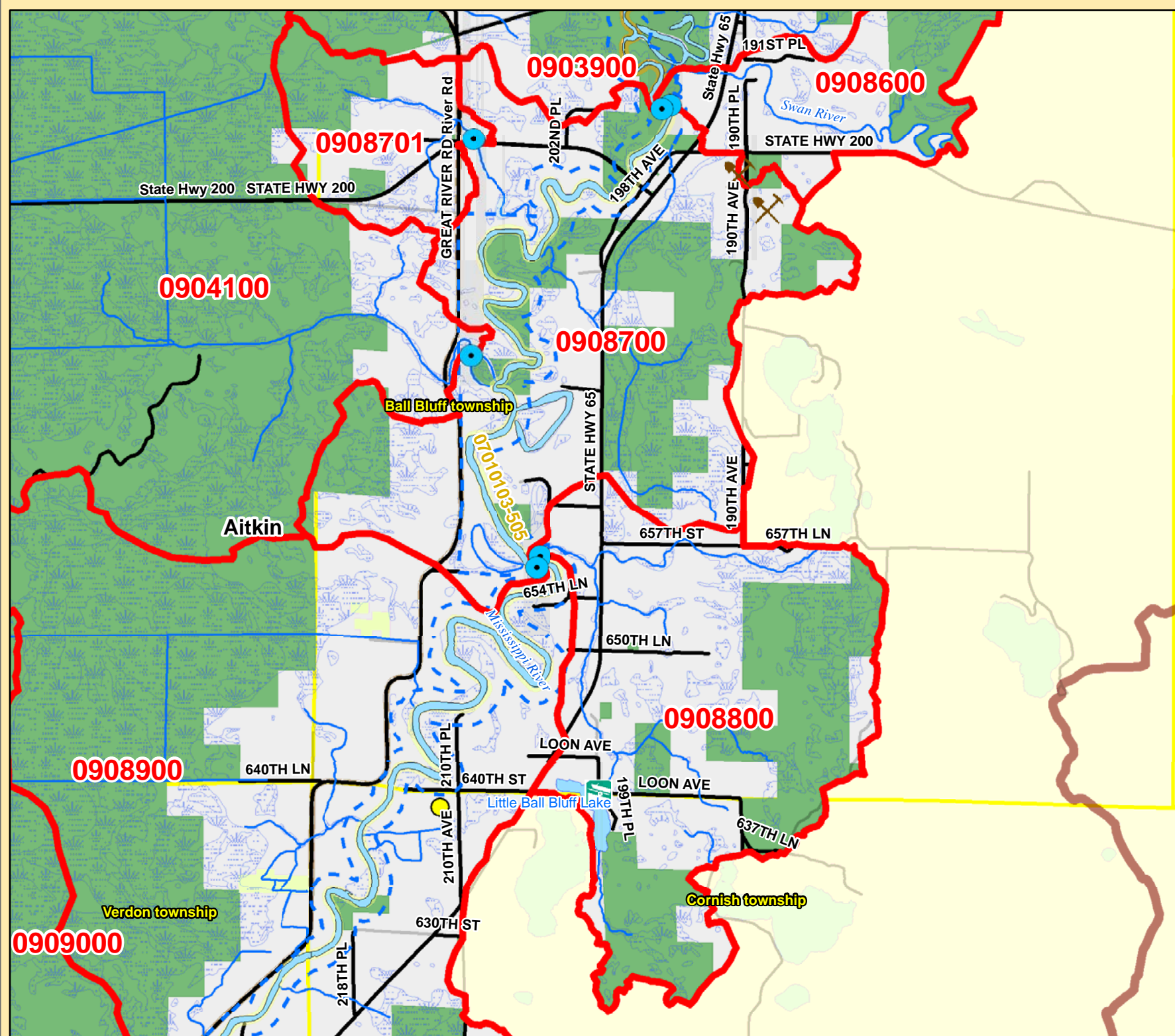
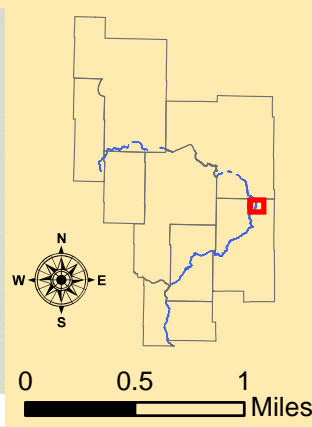


Mississippi R. Catchment Map: Little Ball Bluff Lake



Catchment #	0908700
River Stretch(es) (AUIDs)	07010103-505
Area (sq. miles)	7
Population 2010 (persons per sq. mile)	11
Population Change 2000 to 2010 (persons per sq. mile)	-3
Surficial Geology	Undifferentiated
Topography	Level
% Slope (avg.)	6
% Forested (private)	23
% Disturbed Land Cover	17
% Developed	4
# of Animal Units	0
% Public Land	34
% Easements	0
% Lakes	0
% Mississippi River	4
% Wetlands (private)	12
% Protected	50
Risk Classification	Protection
Implementation Priorities	
<i>Surface Water</i>	
Aquatic Invasive Species	
Development (existing and potential)	
Agricultural BMPs	
Lake Focus:	
Lake Focus: Wild Rice	
Lake Focus: Shallow /Wildlife	
Private Forest Stewardship	
Bluffs & Steep Slopes	
Bald Eagle Territory	
Critical Bird Habitat	
Rare Native Plants / Communities	
Native Mussel Habitat	
<i>Ground Water</i>	
Wellhead Protection	

Catchment #	0908800
River Stretch(es) (AUIDs)	N/A
Area (sq. miles)	5
Population 2010 (persons per sq. mile)	4
Population Change 2000 to 2010 (persons per sq. mile)	0
Surficial Geology	Supraglacial Drift Complex
Topography	Hummocky
% Slope (avg.)	14
% Forested (private)	26
% Disturbed Land Cover	18
% Developed	5
# of Animal Units	0
% Public Land	39
% Easements	0
% Lakes	1
% Mississippi River	0
% Wetlands (private)	11
% Protected	50
Risk Classification	Protection
Implementation Priorities	
<i>Surface Water</i>	
Aquatic Invasive Species	
Development (existing and potential)	
Agricultural BMPs	
Lake Focus:	
Lake Focus: Wild Rice	
Lake Focus: Shallow /Wildlife	
Private Forest Stewardship	x
Bluffs & Steep Slopes	x
Bald Eagle Territory	
Critical Bird Habitat	
Rare Native Plants / Communities	
Native Mussel Habitat	
<i>Ground Water</i>	
Wellhead Protection	



- (W) Public Waterworks
- ★ Water Use: Air Conditioning
- Water Use: Industrial Processing
- ⊕ Irrigation: Crop
- Irrigation: Non Crop
- ⬠ Water Use: Special Categories
- ⬠ MPCA Permitted Sites
- ⬠ Drinking Water Source Protection Areas
- ⬠ Wellhead Protection Areas

- ⬠ Dams
- ⬠ Active Gravel Pits
- ⬠ Water Access Sites
- Feedlots (by primary animal)**
- BIRDS
- BOVINES
- HORSES
- PIGS

- ⬠ Wetlands (from NWI)
- ⬠ Wild Rice
- ⬠ Zebra Mussels
- ⬠ Eurasian W. Milfoil, Faucet Snail, Zebra Mussels
- ⬠ Lakes
- ⬠ Zebra Mussels (Miss R.)
- ⬠ Faucel Snail (Miss R.)
- ⬠ Mississippi River
- ⬠ Trout Streams
- ⬠ Streams

- ⬠ River Stretches (AUIDs) w/ Water Quality Data
- ⬠ River Stretches (AUIDs) w/out Water Quality Data
- Outlet - Major Watershed
- Outlet - Catchment
- ⬠ Catchments (DNR Level 8)
- ⬠ Major Watersheds
- ⬠ Conservation Easements
- ⬠ Public Lands
- ⬠ Cities / Townships
- ⬠ County Boundaries

- ⬠ Roads
- ⬠ Proposed Mississippi River Trail (MRT) Route
- ⬠ Taconite State Trail
- ⬠ Paul Bunyan State Trail
- ⬠ Heartland State Trail
- ⬠ State Park Boundaries
- ⬠ State Recreation Area Boundaries
- ⬠ Scientific and Natural Areas
- ⬠ Wildlife Management Areas
- ⬠ Mississippi Headwaters Board (MHB) - Corridor