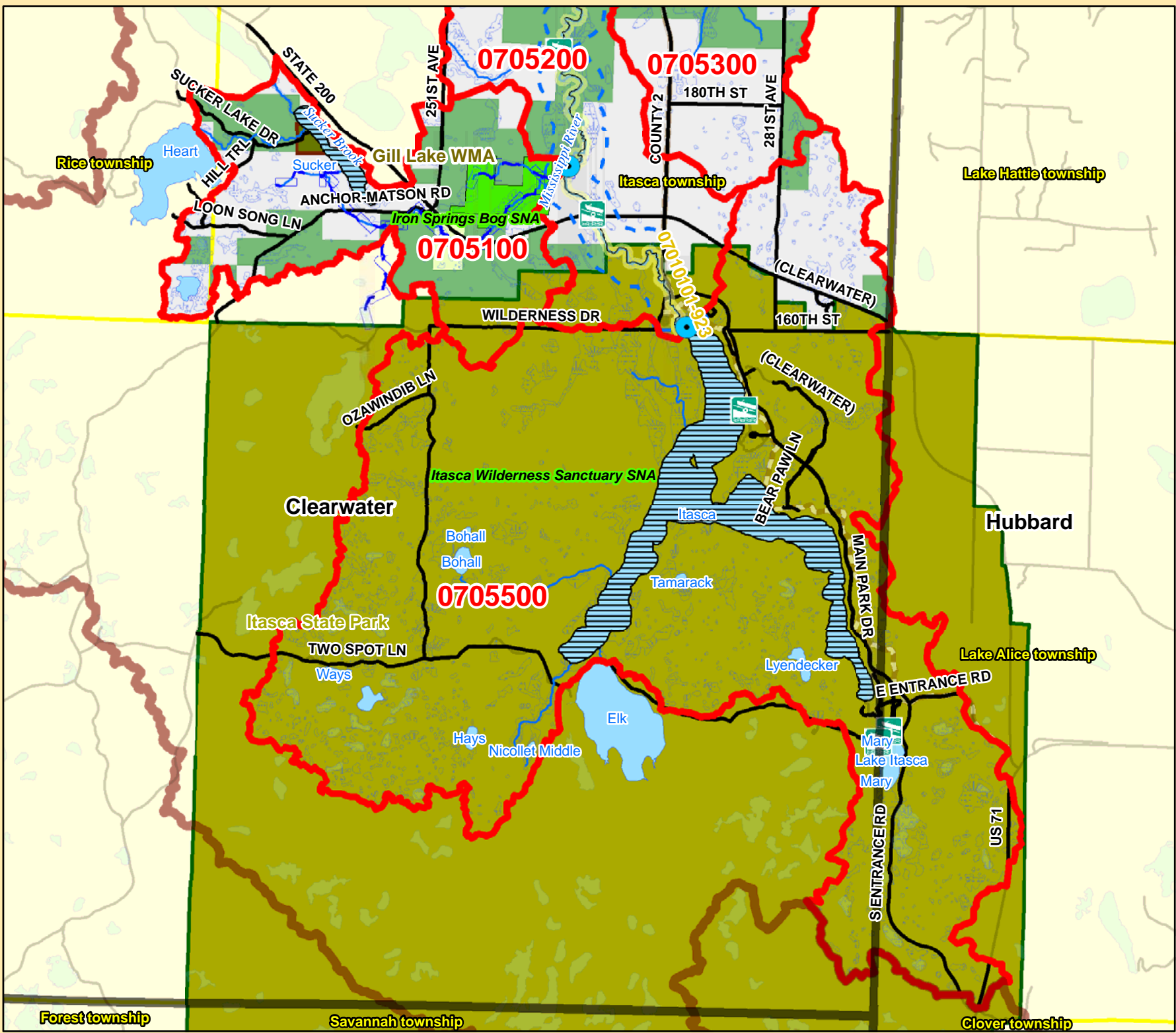


Mississippi River Catchment Map: Itasca Park



Catchment #	0705500
River Stretch(es) (AUIDs)	07010101-923
Area (sq. miles)	23
Population 2010 (persons per sq. mile)	1
Population Change 2000 to 2010 (persons per sq. mile)	0
Surficial Geology	Supraglacial Drift Complex
Topography	Hummocky
% Slope (avg.)	17
% Forested (private)	5
% Disturbed Land Cover	2
% Developed	1
# of Animal Units	0
% Public Land	100
% Easements	0
% Lakes	8
% Mississippi River	0
% Wetlands (private)	1
% Protected	100

Risk Classification **Vigilance**

Implementation Priorities

Surface Water	
Aquatic Invasive Species	
Development (existing and potential)	
Agricultural BMPs	
Lake Focus:	x
Lake Focus: Wild Rice	x
Lake Focus: Shallow /Wildlife	
Private Forest Stewardship	
Bluffs & Steep Slopes	x
Bald Eagle Territory	x
Critical Bird Habitat	x
Rare Native Plants / Communities	x
Native Mussel Habitat	

Ground Water	
Wellhead Protection	

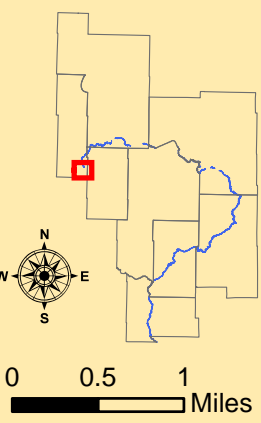
Catchment #	0705100
River Stretch(es) (AUIDs)	07010101-923
Area (sq. miles)	5
Population 2010 (persons per sq. mile)	3
Population Change 2000 to 2010 (persons per sq. mile)	0
Surficial Geology	Supraglacial Drift Complex
Topography	Steep
% Slope (avg.)	16
% Forested (private)	33
% Disturbed Land Cover	5
% Developed	3
# of Animal Units	0
% Public Land	74
% Easements	2
% Lakes	3
% Mississippi River	0
% Wetlands (private)	8
% Protected	87

Risk Classification **Vigilance**

Implementation Priorities

Surface Water	
Aquatic Invasive Species	
Development (existing and potential)	
Agricultural BMPs	
Lake Focus:	
Lake Focus: Wild Rice	x
Lake Focus: Shallow /Wildlife	x
Private Forest Stewardship	x
Bluffs & Steep Slopes	x
Bald Eagle Territory	
Critical Bird Habitat	
Rare Native Plants / Communities	x
Native Mussel Habitat	

Ground Water	
Wellhead Protection	



- Public Waterworks
- Water Use: Air Conditioning
- Water Use: Industrial Processing
- Irrigation: Crop
- Irrigation: Non Crop
- Water Use: Special Categories
- MPCA Permitted Sites
- Drinking Water Source Protection Areas
- Wellhead Protection Areas
- Dams
- Active Gravel Pits
- Water Access Sites
- Feedlots (by primary animal)**
- BIRDS
- BOVINES
- HORSES
- PIGS
- Wetlands (from NWI)
- Wild Rice
- Zebra Mussels
- Eurasian W. Milfoil, Faucet Snail, Zebra Mussels
- Lakes
- Zebra Mussels (Miss R.)
- Faucet Snail (Miss R.)
- Mississippi River
- Trout Streams
- Streams
- River Stretches (AUIDs) w/ Water Quality Data
- River Stretches (AUIDs) w/out Water Quality Data
- Outlet - Major Watershed
- Outlet - Catchment
- Catchments (DNR Level 8)
- Major Watersheds
- Conservation Easements
- Public Lands
- Cities / Townships
- County Boundaries
- Roads
- Proposed Mississippi River Trail (MRT) Route
- Taconite State Trail
- Paul Bunyan State Trail
- Heartland State Trail
- State Park Boundaries
- State Recreation Area Boundaries
- Scientific and Natural Areas
- Wildlife Management Areas
- Mississippi Headwaters Board (MHB) - Corridor